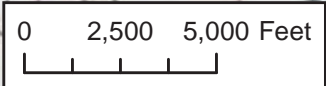
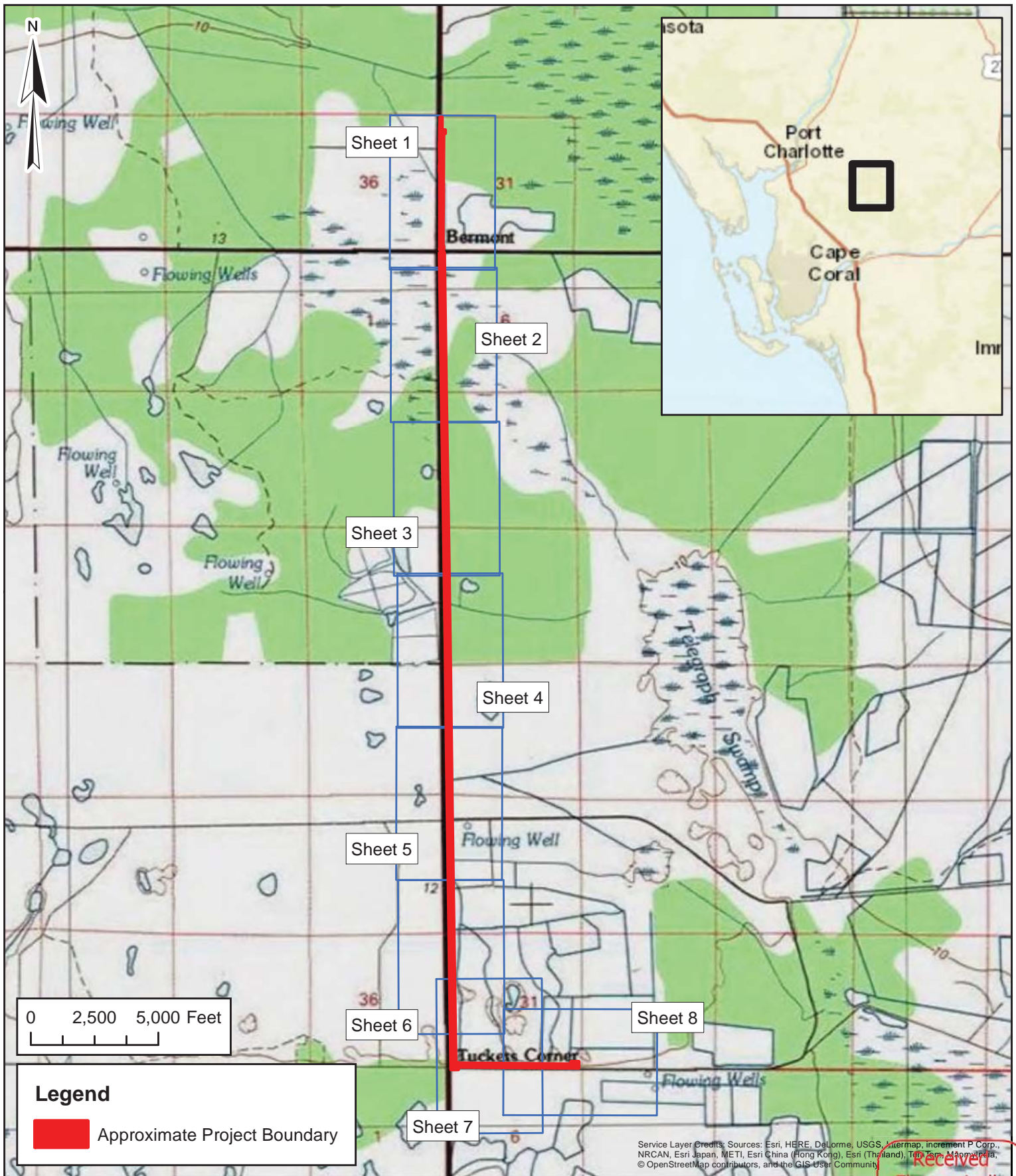



Client: Florida Power & Light Co.
Project: Bermont -Tuckers 230KV
IO/WR #: T16362
Location: Punta Gorda, Charlotte, Florida
Title: Location Map
Sheet: 1 of 1

TRS: 40S26E31, 41S26E6,7,18,19,30,31
Scale: 1" = 5000'
Date: 2/8/2017
Drawn By: MJ
Source: ESRI World Street maps





Legend

 Approximate Project Boundary

Service Layer Credits: Sources: Esri, HERE, DeLorme, USGS, Airmap, increment P Corp., NRCAN, Esri Japan, METI, Esri China (Hong Kong), Esri (Thailand), TomTom, Mapbox, © OpenStreetMap contributors, and the GIS User Community

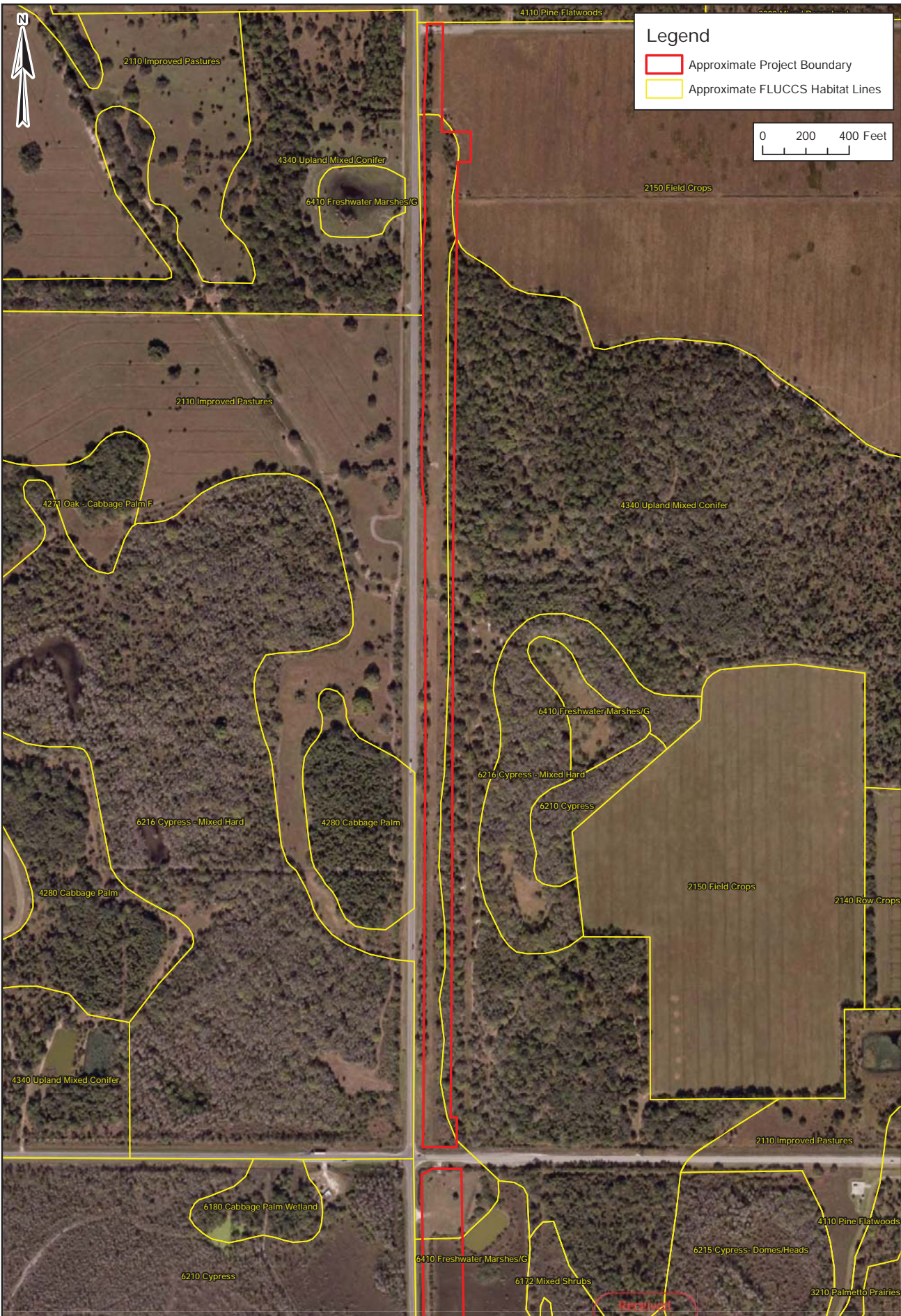
Client: Florida Power & Light Co.
Project: Bermont -Tuckers 230KV
IO/WR #: T16362
Location: Punta Gorda, Charlotte, Florida
Title: USGS Quad Map
Sheet: 1 of 1

TRS: 40S26E31, 41S26E6,7,18,19,30,31
Scale: 1" = 5000'
Date: 2/8/2017
Drawn By: MJ
Source: ESRI World Street and Topo maps

Received
Electronically
February 10, 2017
South District



www.ecoconsultants.net

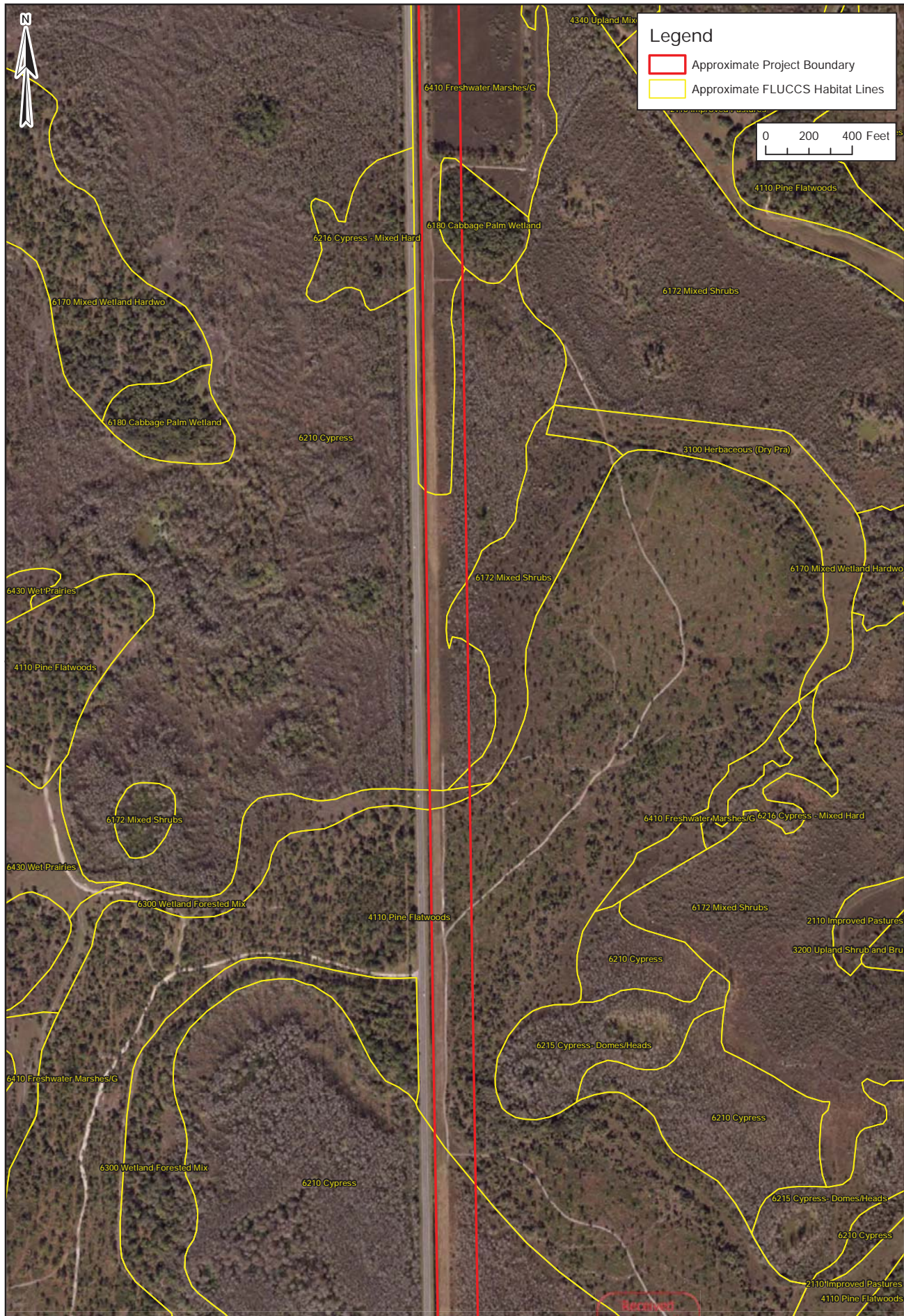


Client: Florida Power & Light Co.
Project: Bermont -Tuckers 230KV
IO/WR #: T16362
Location: Punta Gorda, Charlotte, Florida
Title: FLUCFCS Map
Sheet: 1 of 8

TRS: 40S26E31, 41S26E6,7,18,19,30,31
Scale: 1" = 400'
Date: 2/8/2017
Drawn By: MJ
Source: ESRI World Imagery, SFWMD 2009 Land Cover

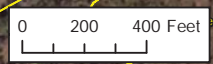
RECEIVED
 Electronically
 February 10, 2017
 South District





Legend

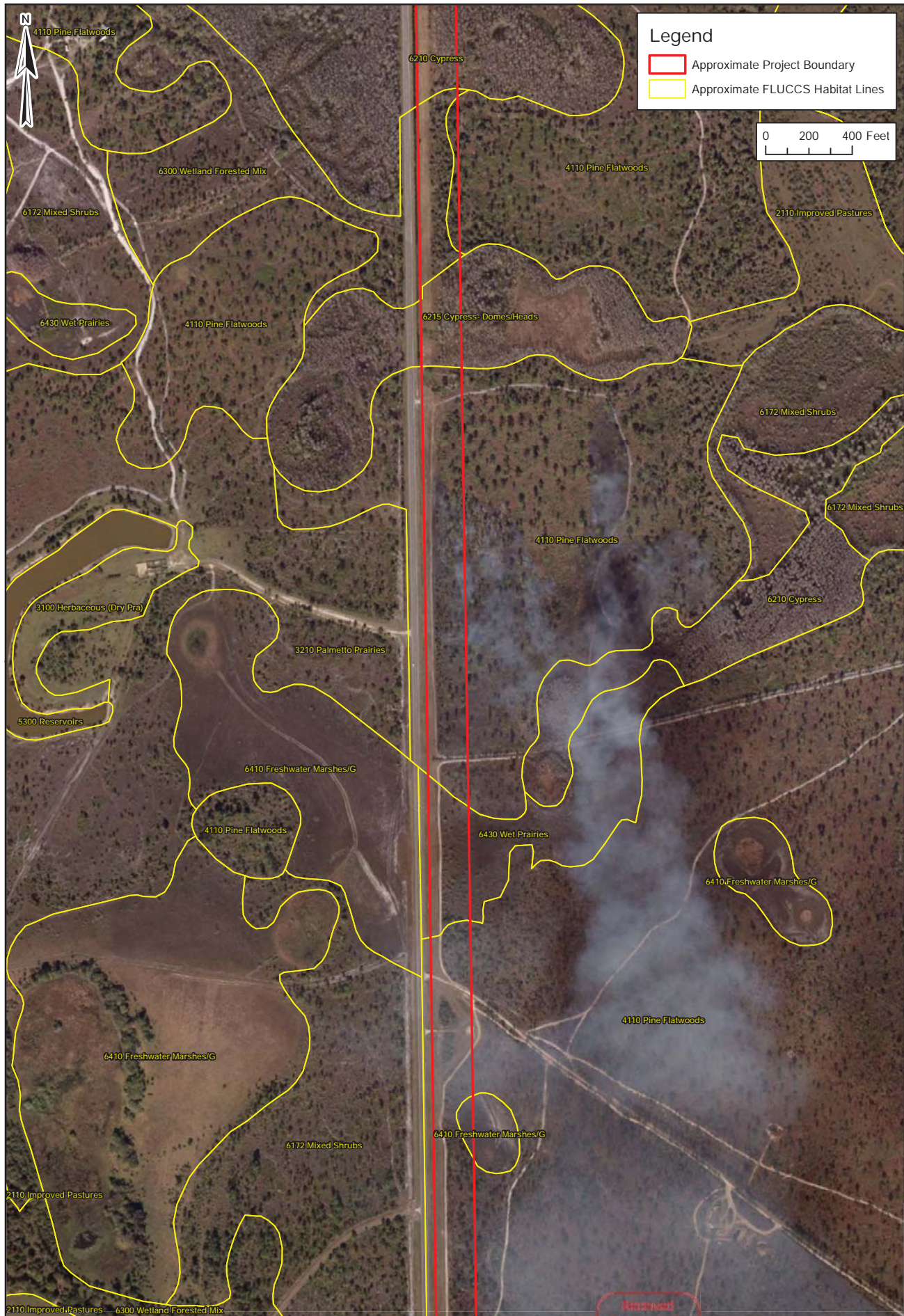
- Approximate Project Boundary
- Approximate FLUCCS Habitat Lines



Client: Florida Power & Light Co.
Project: Bermont -Tuckers 230KV
IO/WR #: T16362
Location: Punta Gorda, Charlotte, Florida
Title: FLUCFCS Map
Sheet: 2 of 8

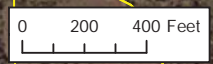
TRS: 40S26E31, 41S26E6,7,18,19,30,31
Scale: 1" = 400'
Date: 2/8/2017
Drawn By: MJ
Source: ESRI World Imagery, SFWMD 2009 Land Cover





Legend

- Approximate Project Boundary
- Approximate FLUCCS Habitat Lines



Client: Florida Power & Light Co.
Project: Bermont -Tuckers 230KV
IO/WR #: T16362
Location: Punta Gorda, Charlotte, Florida
Title: FLUCFCS Map
Sheet: 3 of 8

TRS: 40S26E31, 41S26E6,7,18,19,30,31
Scale: 1" = 400'
Date: 2/8/2017
Drawn By: MJ
Source: ESRI World Imagery, SFWMD 2009 Land Cover





Legend

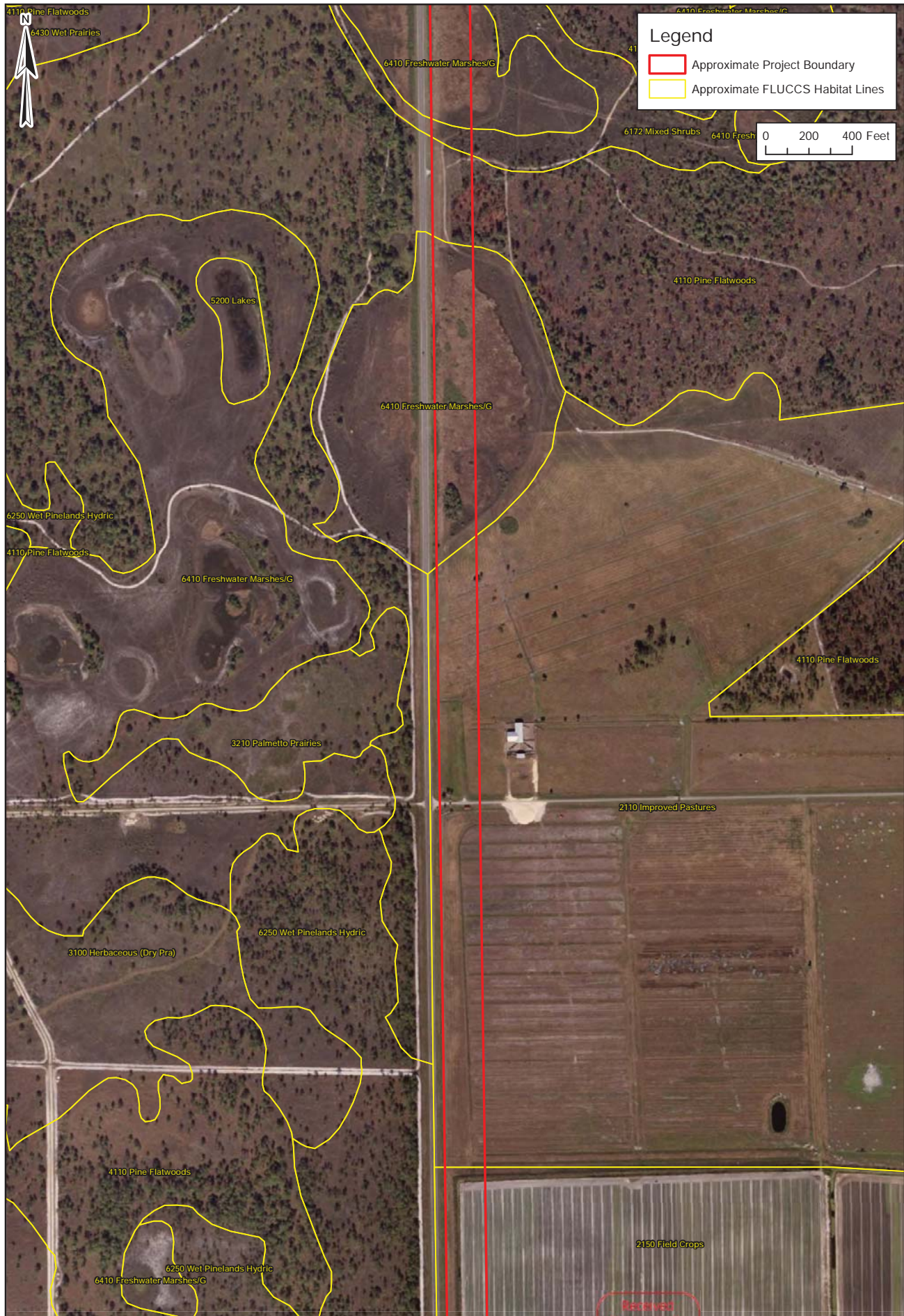
- Approximate Project Boundary
- Approximate FLUCCS Habitat Lines

0 200 400 Feet

Client: Florida Power & Light Co.
Project: Bermont -Tuckers 230KV
IO/WR #: T16362
Location: Punta Gorda, Charlotte, Florida
Title: FLUCFCS Map
Sheet: 4 of 8

TRS: 40S26E31, 41S26E6,7,18,19,30,31
Scale: 1" = 400'
Date: 2/8/2017
Drawn By: MJ
Source: ESRI World Imagery, SFWMD 2009 Land Cover





Legend

- Approximate Project Boundary
- Approximate FLUCCS Habitat Lines

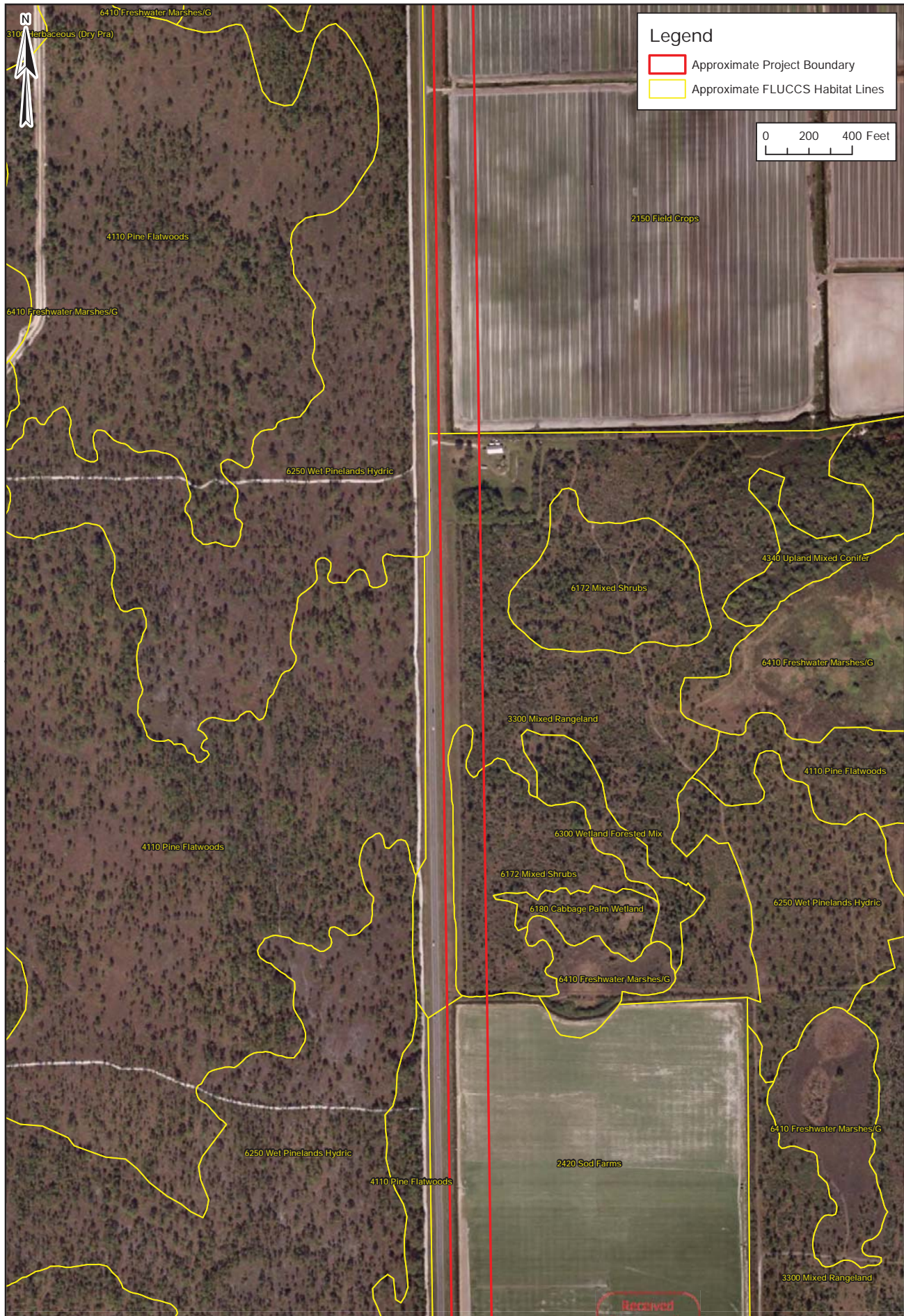
0 200 400 Feet

Client: Florida Power & Light Co.
Project: Bermont -Tuckers 230KV
IO/WR #: T16362
Location: Punta Gorda, Charlotte, Florida
Title: FLUCFCS Map
Sheet: 5 of 8

TRS: 40S26E31, 41S26E6,7,18,19,30,31
Scale: 1" = 400'
Date: 2/8/2017
Drawn By: MJ
Source: ESRI World Imagery, SFWMD 2009 Land Cover

Received
 Electronically
 February 10, 2017
 South District





Legend

- Approximate Project Boundary
- Approximate FLUCCS Habitat Lines

0 200 400 Feet

Client: Florida Power & Light Co.
Project: Bermont -Tuckers 230KV
IO/WR #: T16362
Location: Punta Gorda, Charlotte, Florida
Title: FLUCFCS Map
Sheet: 6 of 8

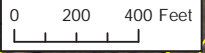
TRS: 40S26E31, 41S26E6,7,18,19,30,31
Scale: 1" = 400'
Date: 2/8/2017
Drawn By: MJ
Source: ESRI World Imagery, SFWMD 2009 Land Cover





Legend

- Approximate Project Boundary
- Approximate FLUCCS Habitat Lines



Client: Florida Power & Light Co.
Project: Bermont -Tuckers 230KV
IO/WR #: T16362
Location: Punta Gorda, Charlotte, Florida
Title: FLUCFCS Map
Sheet: 7 of 8

TRS: 40S26E31, 41S26E6,7,18,19,30,31
Scale: 1" = 400'
Date: 2/8/2017
Drawn By: MJ
Source: ESRI World Imagery, SFWMD 2009 Land Cover





Legend

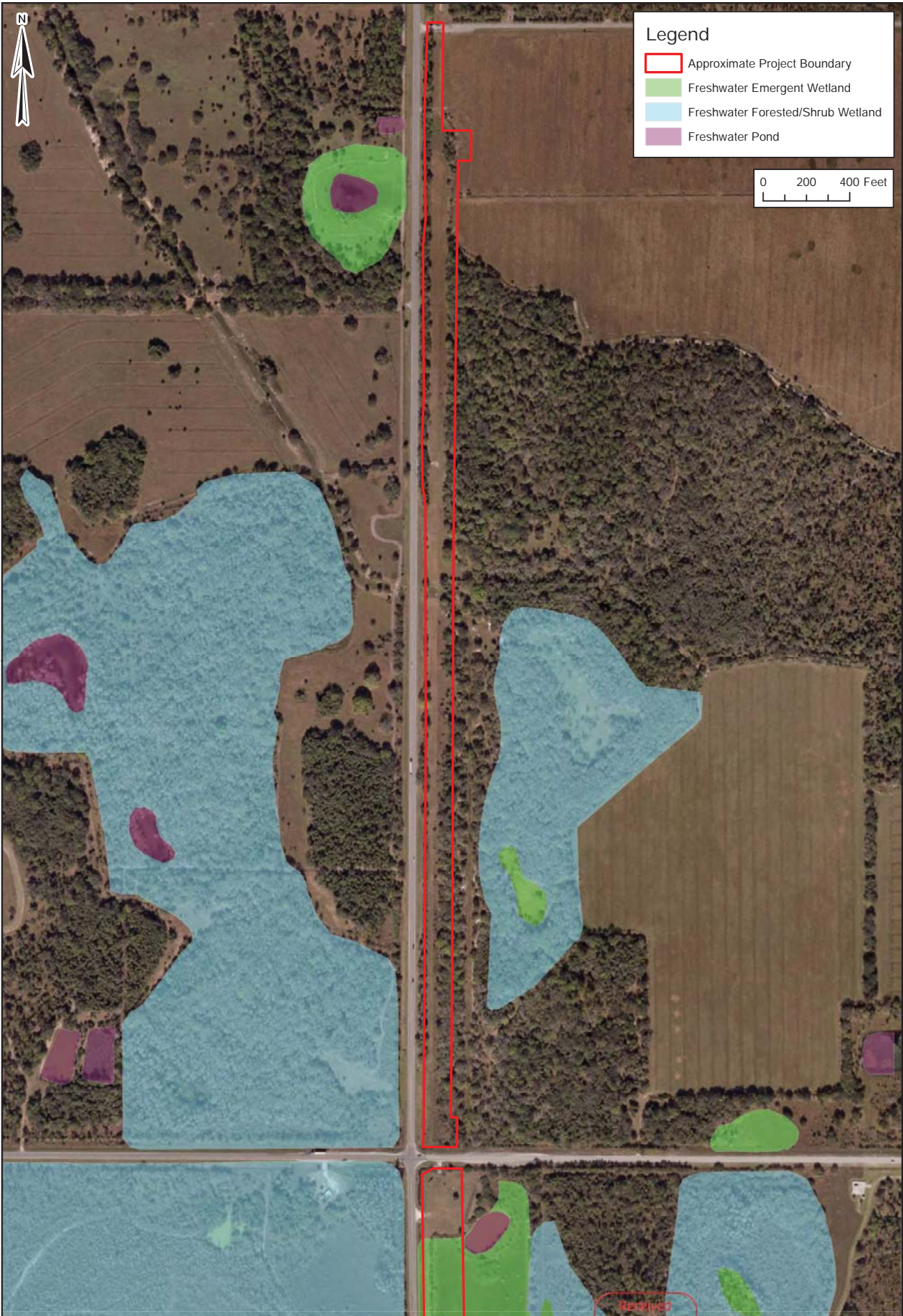
- Approximate Project Boundary
- Approximate FLUCCS Habitat Lines

0 200 400 Feet

Client: Florida Power & Light Co.
Project: Bermont -Tuckers 230KV
IO/WR #: T16362
Location: Punta Gorda, Charlotte, Florida
Title: FLUCFCS Map
Sheet: 8 of 8

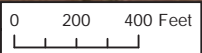
TRS: 40S26E31, 41S26E6,7,18,19,30,31
Scale: 1" = 400'
Date: 2/8/2017
Drawn By: MJ
Source: ESRI World Imagery, SFWMD 2009 Land Cover

4110 Pine Flatwoods
 Electronically
 February 10, 2017
 South District



Legend

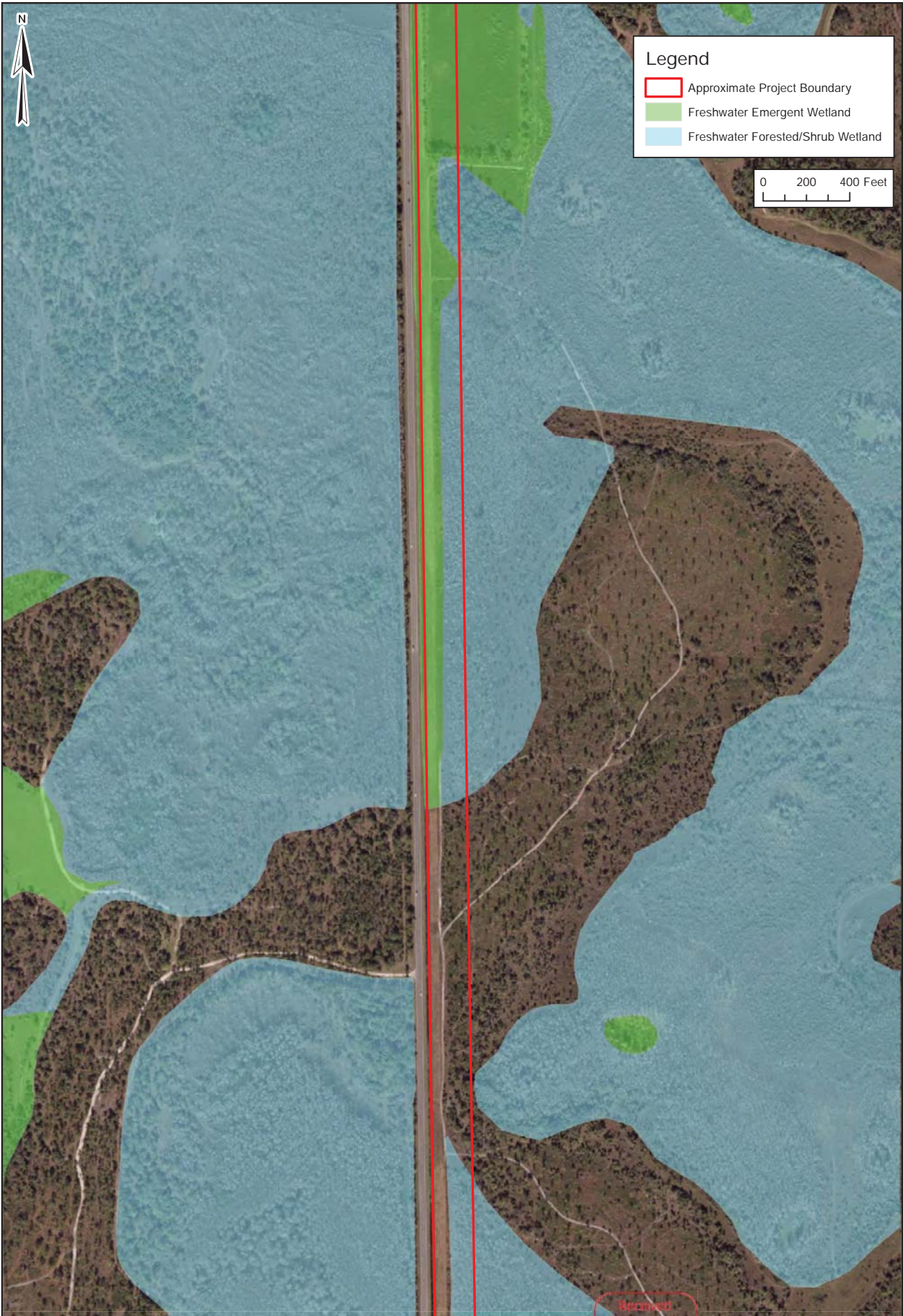
- Approximate Project Boundary
- Freshwater Emergent Wetland
- Freshwater Forested/Shrub Wetland
- Freshwater Pond



Client: Florida Power & Light Co.
Project: Bermont -Tuckers 230KV
IO/WR #: T16362
Location: Punta Gorda, Charlotte, Florida
Title: NWI Source Map
Sheet: 1 of 8

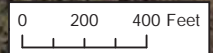
TRS: 40S26E31, 41S26E6,7,18,19,30,31
Scale: 1" = 400'
Date: 2/8/2017
Drawn By: MJ
Source: ESRI World Imagery, NWI





Legend

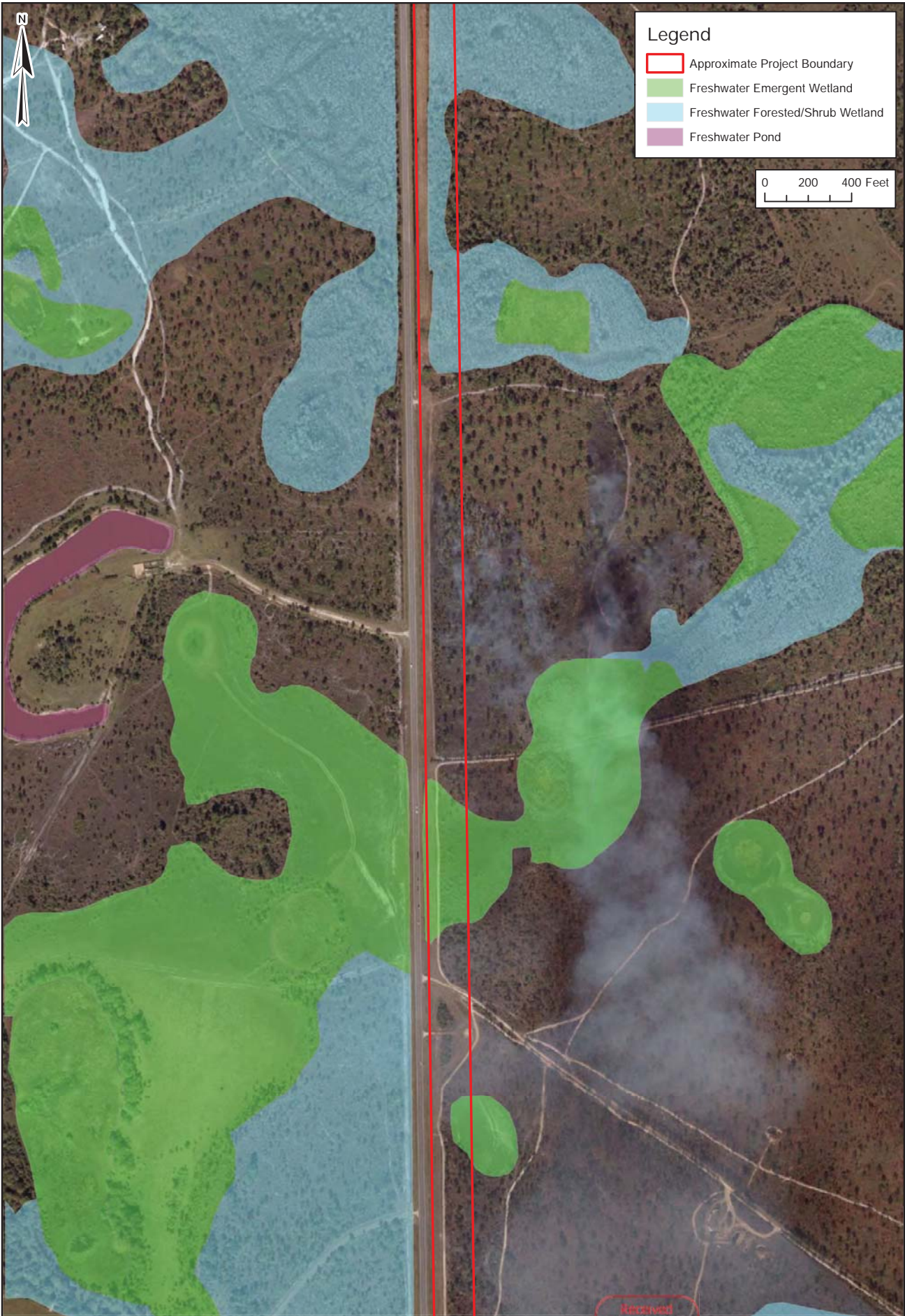
- Approximate Project Boundary
- Freshwater Emergent Wetland
- Freshwater Forested/Shrub Wetland



Client: Florida Power & Light Co.
Project: Bermont -Tuckers 230KV
IO/WR #: T16362
Location: Punta Gorda, Charlotte, Florida
Title: NWI Source Map
Sheet: 2 of 8

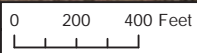
TRS: 40S26E31, 41S26E6,7,18,19,30,31
Scale: 1" = 400'
Date: 2/8/2017
Drawn By: MJ
Source: ESRI World Imagery, NWI





Legend

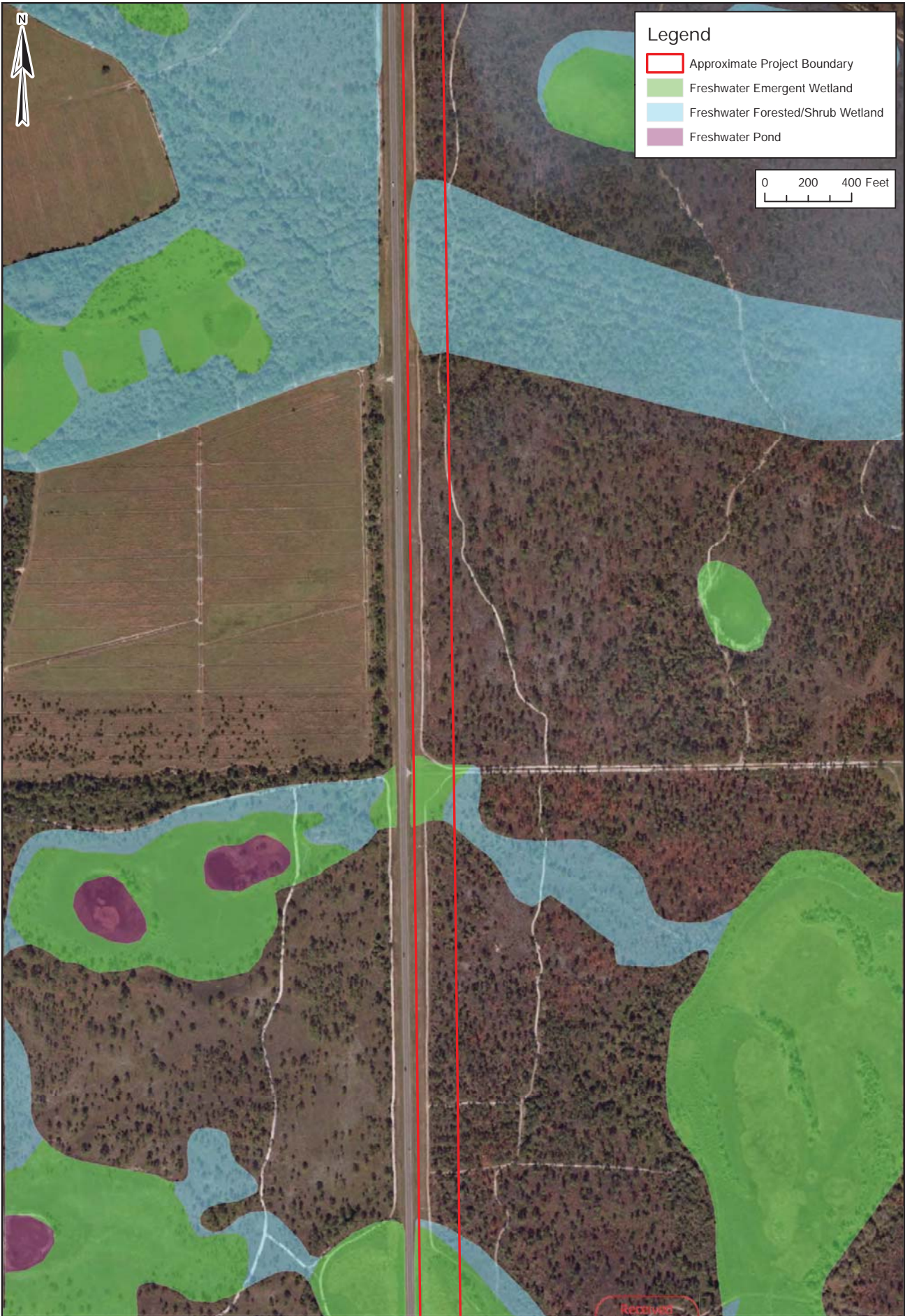
- Approximate Project Boundary
- Freshwater Emergent Wetland
- Freshwater Forested/Shrub Wetland
- Freshwater Pond



Client: Florida Power & Light Co.
Project: Bermont -Tuckers 230KV
IO/WR #: T16362
Location: Punta Gorda, Charlotte, Florida
Title: NWI Source Map
Sheet: 3 of 8

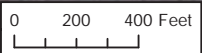
TRS: 40S26E31, 41S26E6,7,18,19,30,31
Scale: 1" = 400'
Date: 2/8/2017
Drawn By: MJ
Source: ESRI World Imagery, NWI





Legend

- Approximate Project Boundary
- Freshwater Emergent Wetland
- Freshwater Forested/Shrub Wetland
- Freshwater Pond



Client: Florida Power & Light Co.
Project: Bermont -Tuckers 230KV
IO/WR #: T16362
Location: Punta Gorda, Charlotte, Florida
Title: NWI Source Map
Sheet: 4 of 8

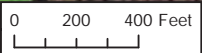
TRS: 40S26E31, 41S26E6,7,18,19,30,31
Scale: 1" = 400'
Date: 2/8/2017
Drawn By: MJ
Source: ESRI World Imagery, NWI





Legend

- Approximate Project Boundary
- Freshwater Emergent Wetland
- Freshwater Forested/Shrub Wetland
- Freshwater Pond



Client: Florida Power & Light Co.
Project: Bermont -Tuckers 230KV
IO/WR #: T16362
Location: Punta Gorda, Charlotte, Florida
Title: NWI Source Map
Sheet: 5 of 8

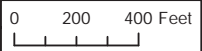
TRS: 40S26E31, 41S26E6,7,18,19,30,31
Scale: 1" = 400'
Date: 2/8/2017
Drawn By: MJ
Source: ESRI World Imagery, NWI





Legend

- Approximate Project Boundary
- Freshwater Emergent Wetland
- Freshwater Forested/Shrub Wetland



Client: Florida Power & Light Co.
Project: Bermont -Tuckers 230KV
IO/WR #: T16362
Location: Punta Gorda, Charlotte, Florida
Title: NWI Source Map
Sheet: 6 of 8

TRS: 40S26E31, 41S26E6,7,18,19,30,31
Scale: 1" = 400'
Date: 2/8/2017
Drawn By: MJ
Source: ESRI World Imagery, NWI





Client: Florida Power & Light Co.
Project: Bermont -Tuckers 230KV
IO/WR #: T16362
Location: Punta Gorda, Charlotte, Florida
Title: NWI Source Map
Sheet: 7 of 8

TRS: 40S26E31, 41S26E6,7,18,19,30,31
Scale: 1" = 400'
Date: 2/8/2017
Drawn By: MJ
Source: ESRI World Imagery, NWI





Legend

- Approximate Project Boundary
- Freshwater Emergent Wetland
- Freshwater Forested/Shrub Wetland

0 200 400 Feet

Client: Florida Power & Light Co.
Project: Bermont -Tuckers 230KV
IO/WR #: T16362
Location: Punta Gorda, Charlotte, Florida
Title: NWI Source Map
Sheet: 8 of 8

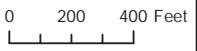
TRS: 40S26E31, 41S26E6,7,18,19,30,31
Scale: 1" = 400'
Date: 2/8/2017
Drawn By: MJ
Source: ESRI World Imagery, NWI





Legend

- Approximate Project Boundary
- Fred C. Babcock-Cecil M. Webb Wildlife Management Area
- Babcock Ranch Preserve



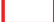


Client: Florida Power & Light Co.
Project: Bermont -Tuckers 230KV
IO/WR #: T16362
Location: Punta Gorda, Charlotte, Florida
Title: Protected Lands Map
Sheet: 1 of 8

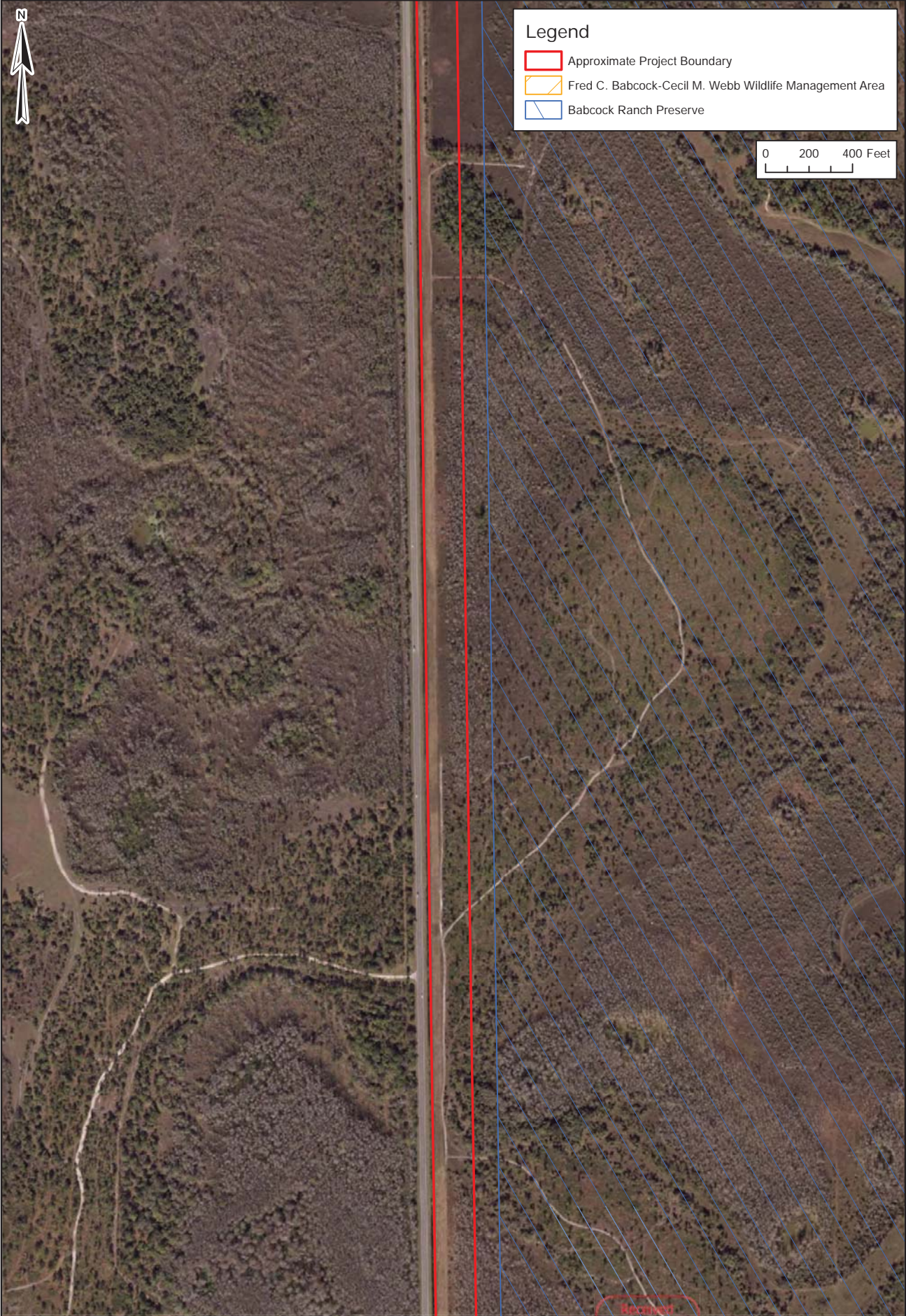
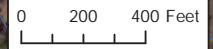
TRS: 40S26E31, 41S26E6,7,18,19,30,31
Scale: 1" = 400'
Date: 2/8/2017
Drawn By: MJ
Source: ESRI World Imagery, DEP





Legend

-  Approximate Project Boundary
-  Fred C. Babcock-Cecil M. Webb Wildlife Management Area
-  Babcock Ranch Preserve



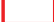


Client: Florida Power & Light Co.
Project: Bermont -Tuckers 230KV
IO/WR #: T16362
Location: Punta Gorda, Charlotte, Florida
Title: Protected Lands Map
Sheet: 2 of 8

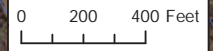
TRS: 40S26E31, 41S26E6,7,18,19,30,31
Scale: 1" = 400'
Date: 2/8/2017
Drawn By: MJ
Source: ESRI World Imagery, DEP





Legend

-  Approximate Project Boundary
-  Fred C. Babcock-Cecil M. Webb Wildlife Management Area
-  Babcock Ranch Preserve



Client: Florida Power & Light Co.
Project: Bermont -Tuckers 230KV
IO/WR #: T16362
Location: Punta Gorda, Charlotte, Florida
Title: Protected Lands Map
Sheet: 3 of 8

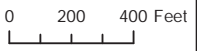
TRS: 40S26E31, 41S26E6,7,18,19,30,31
Scale: 1" = 400'
Date: 2/8/2017
Drawn By: MJ
Source: ESRI World Imagery, DEP





Legend

- Approximate Project Boundary
- Fred C. Babcock-Cecil M. Webb Wildlife Management Area
- Babcock Ranch Preserve



Client: Florida Power & Light Co.
Project: Bermont -Tuckers 230KV
IO/WR #: T16362
Location: Punta Gorda, Charlotte, Florida
Title: Protected Lands Map
Sheet: 4 of 8

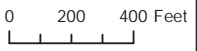
TRS: 40S26E31, 41S26E6,7,18,19,30,31
Scale: 1" = 400'
Date: 2/8/2017
Drawn By: MJ
Source: ESRI World Imagery, DEP





Legend

- Approximate Project Boundary
- Fred C. Babcock-Cecil M. Webb Wildlife Management Area
- Babcock Ranch Preserve



Client: Florida Power & Light Co.
Project: Bermont -Tuckers 230KV
IO/WR #: T16362
Location: Punta Gorda, Charlotte, Florida
Title: Protected Lands Map
Sheet: 5 of 8

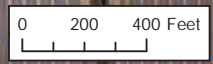
TRS: 40S26E31, 41S26E6,7,18,19,30,31
Scale: 1" = 400'
Date: 2/8/2017
Drawn By: MJ
Source: ESRI World Imagery, DEP





Legend

- Approximate Project Boundary
- Fred C. Babcock-Cecil M. Webb Wildlife Management Area
- Babcock Ranch Preserve



Client: Florida Power & Light Co.
Project: Bermont -Tuckers 230KV
IO/WR #: T16362
Location: Punta Gorda, Charlotte, Florida
Title: Protected Lands Map
Sheet: 6 of 8

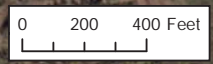
TRS: 40S26E31, 41S26E6,7,18,19,30,31
Scale: 1" = 400'
Date: 2/8/2017
Drawn By: MJ
Source: ESRI World Imagery, DEP





Legend

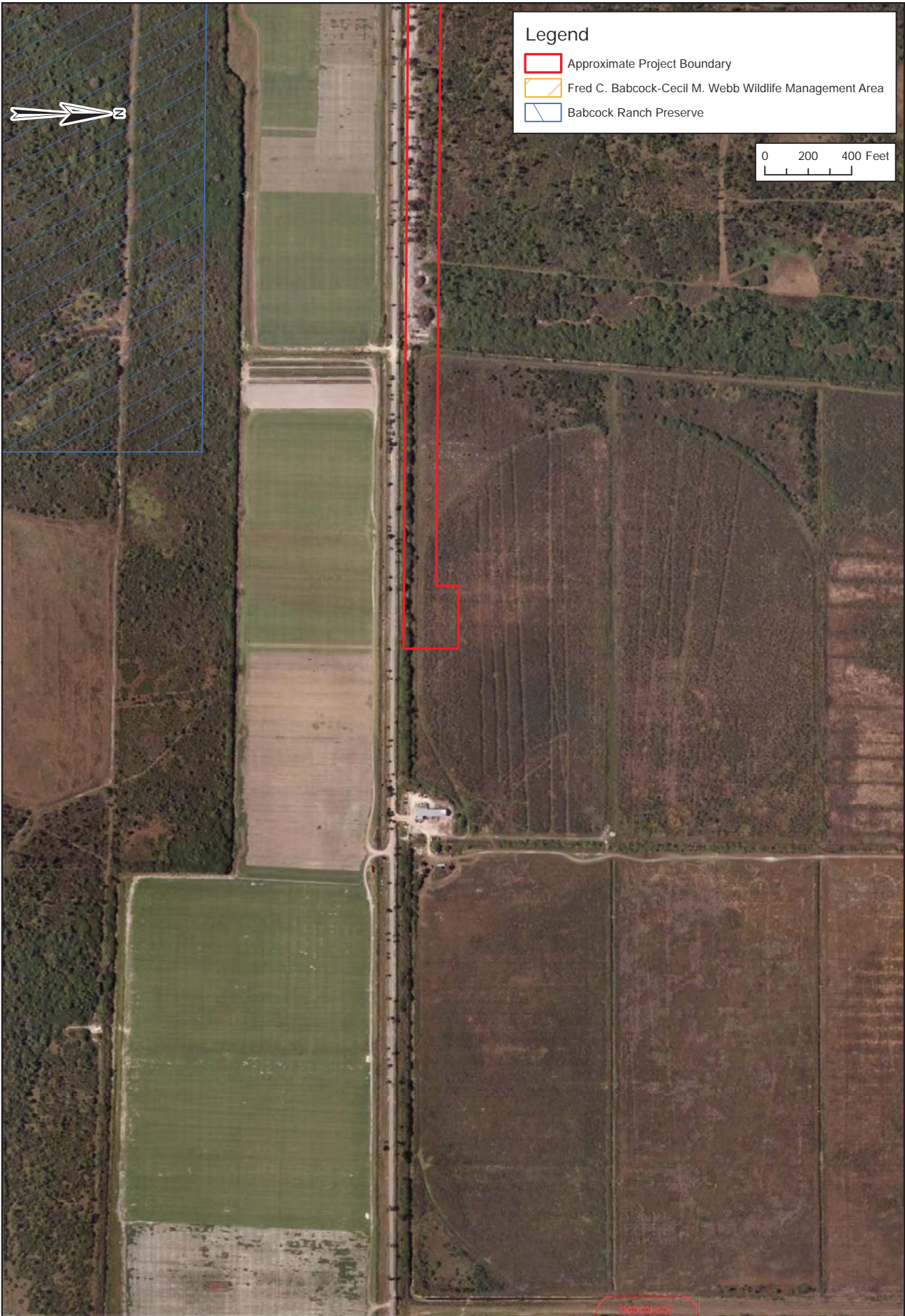
- Approximate Project Boundary
- Fred C. Babcock-Cecil M. Webb Wildlife Management Area
- Babcock Ranch Preserve



Client: Florida Power & Light Co.
Project: Bermont -Tuckers 230KV
IO/WR #: T16362
Location: Punta Gorda, Charlotte, Florida
Title: Protected Lands Map
Sheet: 7 of 8

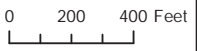
TRS: 40S26E31, 41S26E6,7,18,19,30,31
Scale: 1" = 400'
Date: 2/8/2017
Drawn By: MJ
Source: ESRI World Imagery, DEP





Legend

- Approximate Project Boundary
- Fred C. Babcock-Cecil M. Webb Wildlife Management Area
- Babcock Ranch Preserve



Client: Florida Power & Light Co.
Project: Bermont -Tuckers 230KV
IO/WR #: T16362
Location: Punta Gorda, Charlotte, Florida
Title: Protected Lands Map
Sheet: 8 of 8

TRS: 40S26E31, 41S26E6,7,18,19,30,31
Scale: 1" = 400'
Date: 2/8/2017
Drawn By: MJ
Source: ESRI World Imagery, DEP

Received
 Electronically
 February 10, 2017
 South District